



YOUR
GALAXY
IN YOUR HANDS



The group was incorporated with a promise to seek the continuous challenge of developing, constructing and managing projects accommodating every need of the customer. Avichal Projects envisions to raise the standard of living of the society with its quality focused real estate projects.



Avichal Galaxy is the project of Avichal Projects catering to residential and commercial segment, focusing on ushering a modern yet a convenient lifestyle, thereby ensuring a quality living.



LIVE UP TO IT

A seamless integration of residential property with a commercial complex that makes you close to life's every convenience.
Experience the best of both!
Experience **Avichal Galaxy!**



A GRAND WAY OF LIVING

A unique blend of convenience and lifestyle, Avichal Galaxy offers a desirable combination of a prime location and state of the art facilities. Experience the grand way of living with a commercial complex just below you!





PLANNED TO PERFECTION

Designed in a contemporary style, it makes you look up with admiration to the spectacular view of the apartments and the commercial complex



THE HOME OF YOUR DREAMS

A unique blend of convenience and lifestyle, Avichal Galaxy offers a desirable combination of a prime location and state of the art facilities. Experience the grand way of living with a commercial complex just below you!



THE REALM OF
CALMNESS



GROUND FLOOR PLAN GALAXY - 1



BLOCK A - Shops
 BLOCK B - Shops
 BLOCK C - Shops
 BLOCK D - Shops
 BLOCK E - Shops
 BLOCK F - Parking

- 1 Entrance Gate
- 2 Drop-Off Zone
- 3 Garden
- 4 Jogging Track
- 5 Children Play Area
- 6 Seating Area
- 7 Two Wheeler Parking
- 8 Four Wheeler Parking
- 9 Basement Ramp

FIRST FLOOR PLAN GALAXY - 1



BLOCK A - Shops
 BLOCK B - Shops
 BLOCK C - Shops
 BLOCK D - Shops
 BLOCK E - Shops
 BLOCK F - 1BHK

TYPICAL FLOOR PLAN GALAXY - 1



GROUND FLOOR PLAN GALAXY - 2



- BLOCK A - Studio
- BLOCK B - Studio
- BLOCK C - Studio
- BLOCK D - Studio
- BLOCK E - Studio
- BLOCK F - 1BHK



- BLOCK A - Shops
- BLOCK B - Shops
- BLOCK C - Shops
- BLOCK D - Shops
- BLOCK E - Shops
- BLOCK F - Parking
- BLOCK G - Parking
- BLOCK H - Parking
- BLOCK I - Parking
- 1 Entrance Gate
- 2 Children Play Area
- 3 Garden
- 4 Seating Area
- 5 Multipurpose Hall
- 6 Gazebo
- 7 Two Wheeler Parking
- 8 Four Wheeler Parking
- 9 Basement Ramp

FIRST FLOOR PLAN | GALAXY - 2



TYPICAL FLOOR PLAN | GALAXY - 2



- BLOCK A - Shops
- BLOCK B - Shops
- BLOCK C - Shops
- BLOCK D - Shops
- BLOCK E - Offices
- BLOCK F - 1BHK
- BLOCK G - 1BHK
- BLOCK H - 2BHK
- BLOCK I - 2BHK



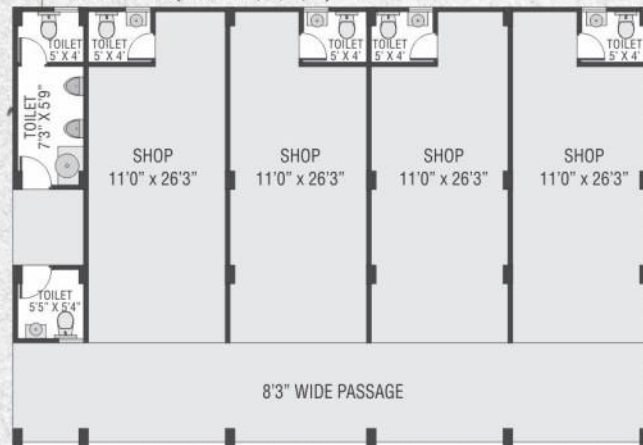
- BLOCK A - Studio
- BLOCK B - Studio
- BLOCK C - Studio
- BLOCK D - Studio
- BLOCK E - Offices
- BLOCK F - 1BHK
- BLOCK G - 1BHK
- BLOCK H - 2BHK
- BLOCK I - 2BHK

UNIT SHOPS FLOOR PLAN

UNIT 1BHK FLOOR PLAN

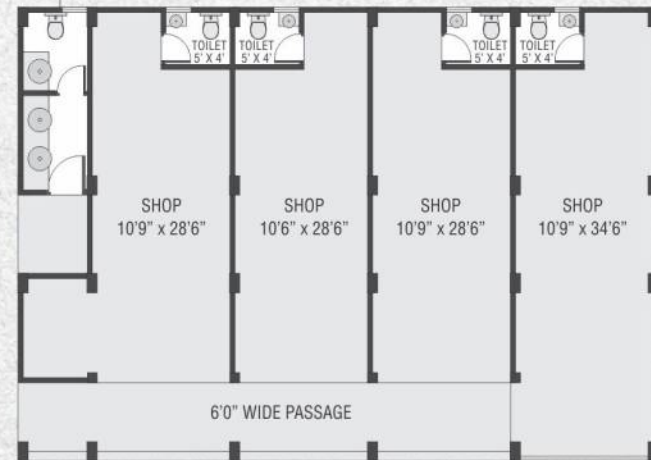
FIRST FLOOR

GALAXY - 1 (Block : A, B, C, D)
GALAXY - 2 (Block : A, B, C, D)



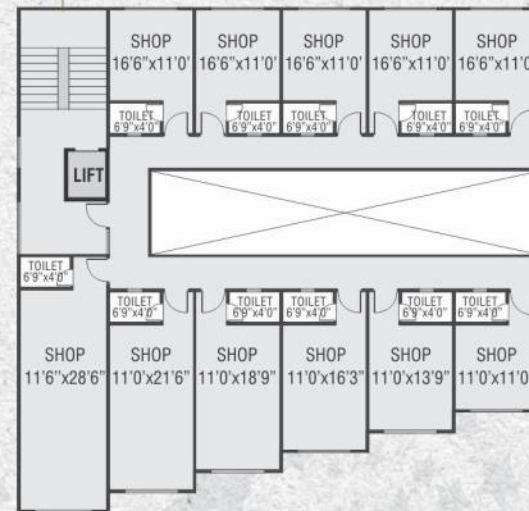
FIRST FLOOR

GALAXY - 1 (Block : E)



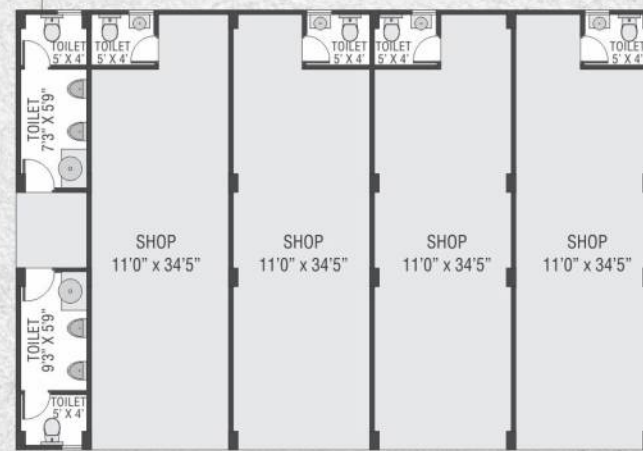
FIRST FLOOR

GALAXY - 2 (Block : E)



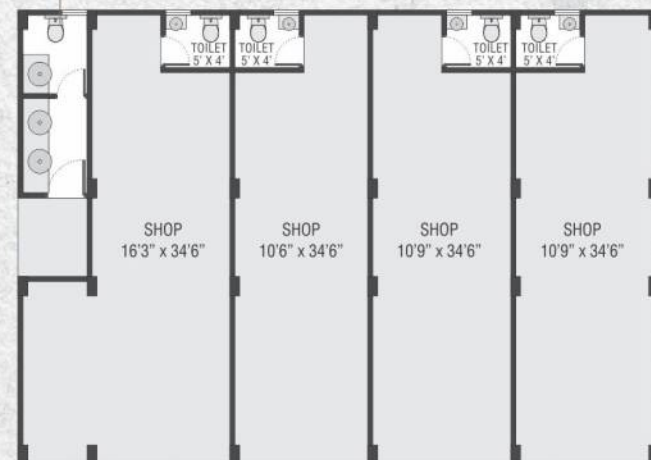
GROUND FLOOR

GALAXY - 1 (Block : A, B, C, D)
GALAXY - 2 (Block : A, B, C, D)



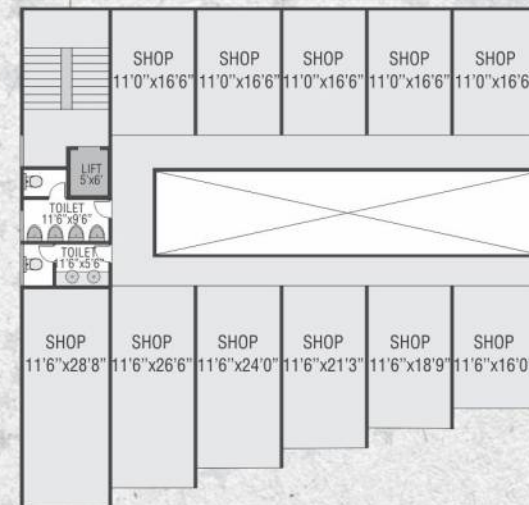
GROUND FLOOR

GALAXY - 1 (Block : E)



GROUND FLOOR

GALAXY - 2 (Block : E)



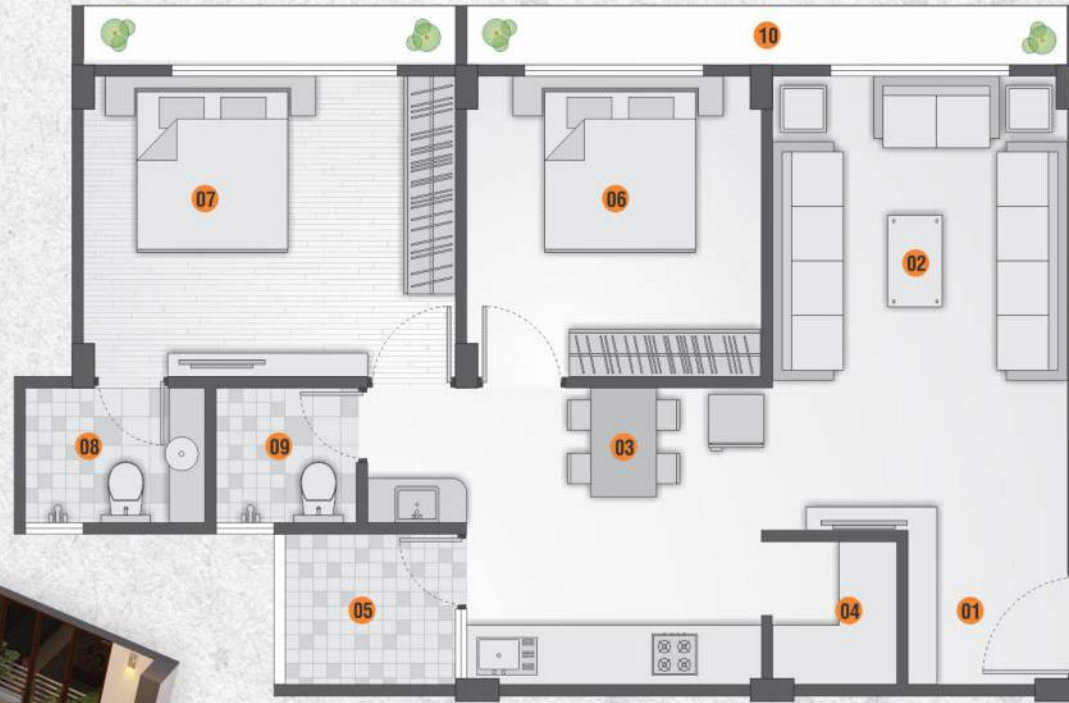
GALAXY - 1 (Block : F)
GALAXY - 2 (Block : F, G)



01	Drawing Room	10'0" X 14'6"
02	Kitchen	8'6" X 8'0"
03	Wash	4'0" X 8'0"
04	Bedroom	10'0" X 10'0"
05	Bathroom	3'6" X 4'6"
06	W.C.	4'3" X 3'3"

UNIT
FLOOR PLAN | 2BHK

GALAXY - 2 (Block : H, I)

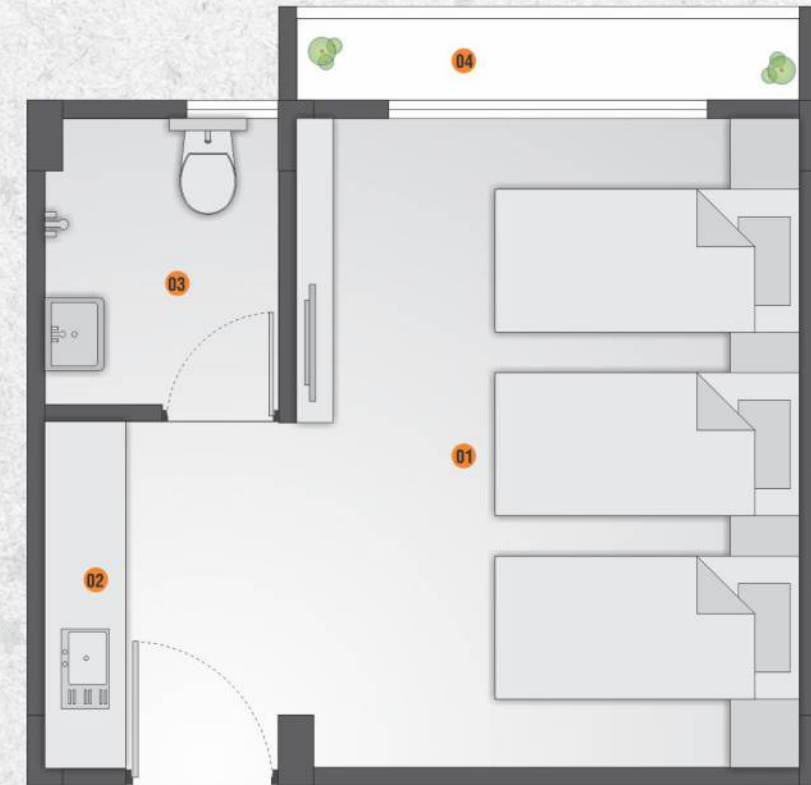


01	Vestibule	5'6" X 5'3"
02	Drawing Room	10'0" X 15'3"
03	Kitchen/Dining	10'0" X 9'10"
04	Store	4'3" X 4'9"
05	Wash	6'3" X 5'0"
06	Bedroom-01	10'0" X 10'0"
07	Master bedroom	12'9" X 10'0"
08	Toilet	4'6" X 6'3"
09	Common Toilet	4'6" X 4'9"
10	Balcony	2'0" Wide

UNIT
FLOOR PLAN | STUDIO UNIT

GALAXY - 1 (Block : A, B, C, D, E)

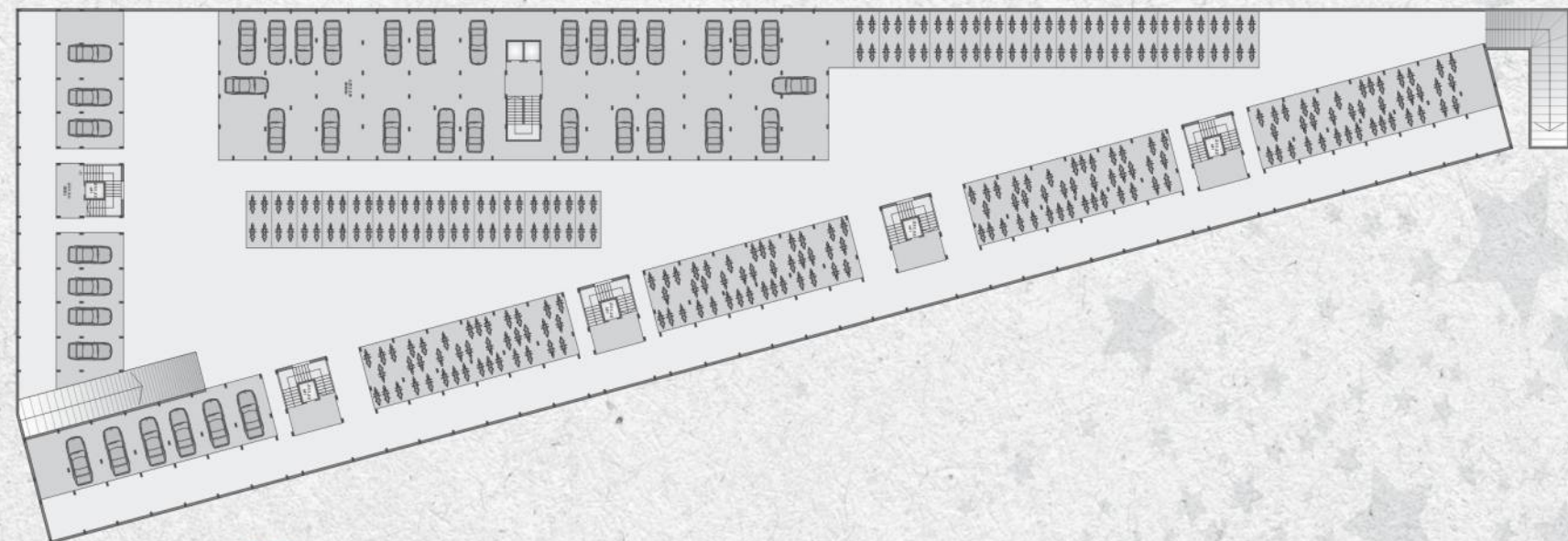
GALAXY - 2 (Block : A, B, C, D)



01	Room	10'9" X 13'9"
02	Pantry	5'6" X 7'3"
03	Toilet	5'0" X 6'0"
04	Balcony	2'0" Wide

BASEMENT PARKING PLAN

GALAXY - 1



SPECIFICATIONS

Structure:

Earthquake resistant structure of R.C.C. frame work with brick masonry wall.

Wall Finish:

Internal smooth plaster with white putty and external sand faced plaster with acrylic paint.

Flooring:

Vitrified tiles flooring

Windows:

Fully glass windows with aluminum section

Doors:

Decorative main door with wooden frame and other doors are flush doors.

Kitchen:

Granite platform with & S.S. sink, coloured glazed tiles dedo upto lintel level

Toilet:

ISI Branded S.S. fixtures and Colored glazed tiles dedo in all toilets up to lintel level

Electrification:

ISI Branded Concealed copper wiring with A.C., T.V. and Water Purifier point and adequate points as per architect design.

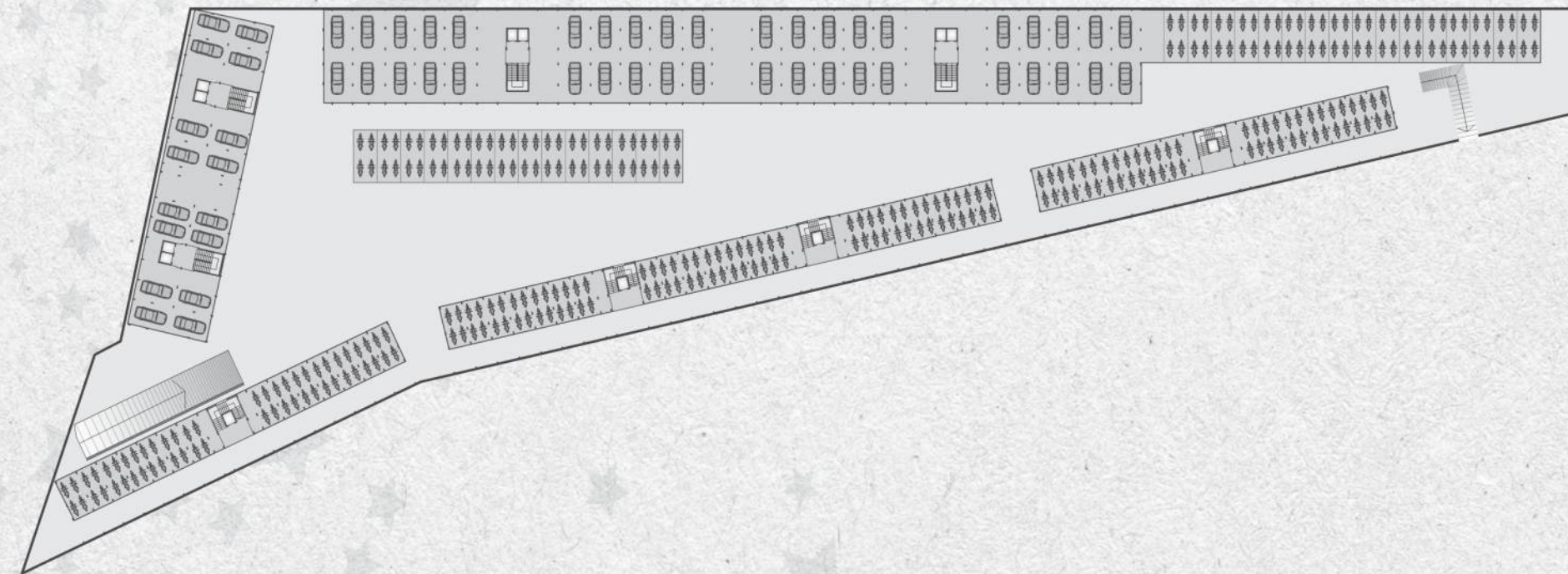
Terrace:

China mosaic on terrace for Heat-reduction and longer life of building

Ready-to-move fully furnished apartments also available on request. (at extra cost)

BASEMENT PARKING PLAN

GALAXY - 2



AMENITIES

- Attractive Entrance Gate with 24X7 Security
- Pick up & Drop off Zone
- 24 hrs. water supply
- Four wheeler and Two wheeler parking
- Elevators
- Power backup for common areas and elevators
- Landscaped Garden
- Jogging Track
- Gazebo
- Senior Citizen Park
- Children Play area
- Sand Pit
- Multipurpose Hall





Site:
 B/h. Phenix Construction Technologies,
 GIDC Gate no. 1, Nr. Tata Nano Vendor Park,
 Village : Khoda, Sanand

DEVELOPER



ARCHITECT
S.P. Patel Architects and Planners Pvt. Ltd
 10/B ADC Bank Staff Society,
 B/H Shivalik Plaza, IIM Road,
 Near Panjarapole, Ambawadi, Ahmedabad.

STRUCTURAL CONSULTANT
Ame Associates
 401 Shanti Arcade, Nr. AEC Cross Road,
 132 Feet Ring Road, Naranpura,
 Ahmedabad.

FOR BOOKING: +91 90 99 00 33 31 | +91 90 99 00 33 32
info@avichalprojects.com | www.avichalprojects.com

Notes : This brochure shall not be treated as a legal document; it is only for the purpose of information and early display of the project.